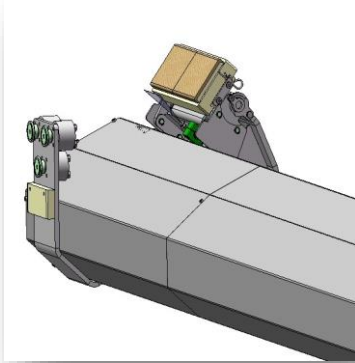


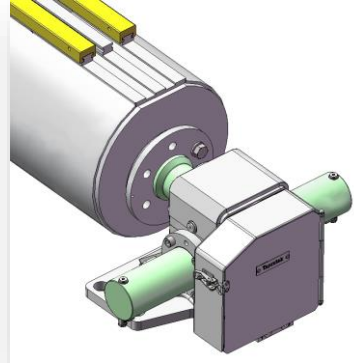


Action, motion and change!

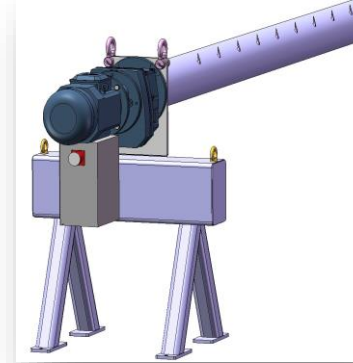
Products



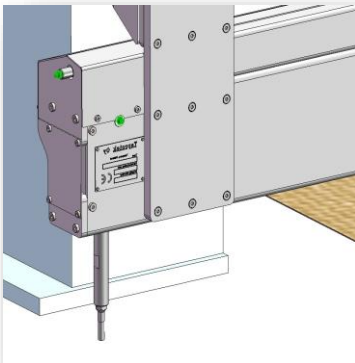
Quick
Cleaner



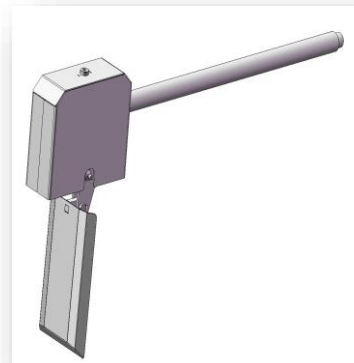
Tilt Gear



Spike Roller



Tail
Threading
Cutter

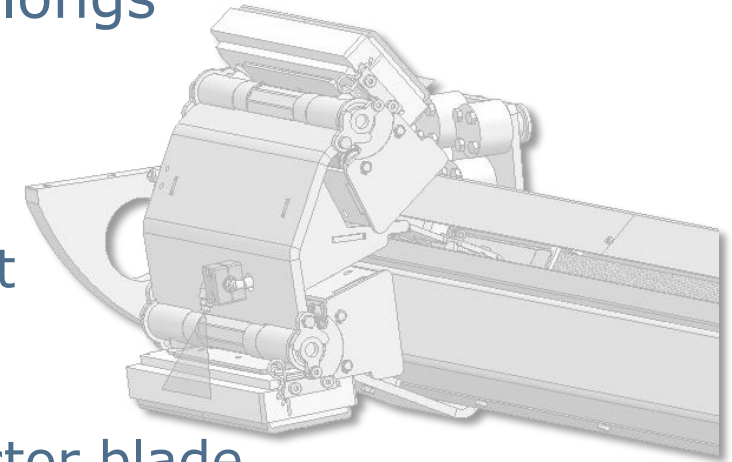
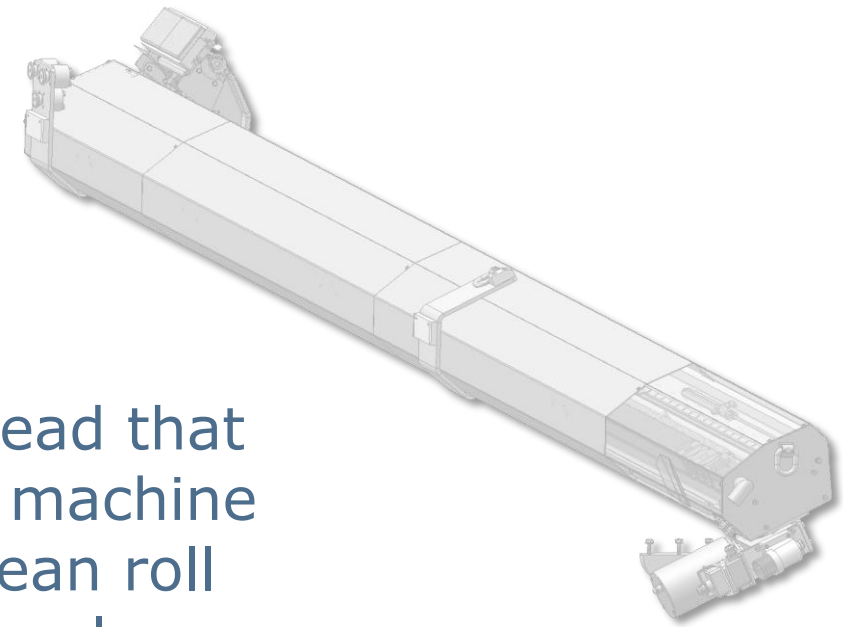


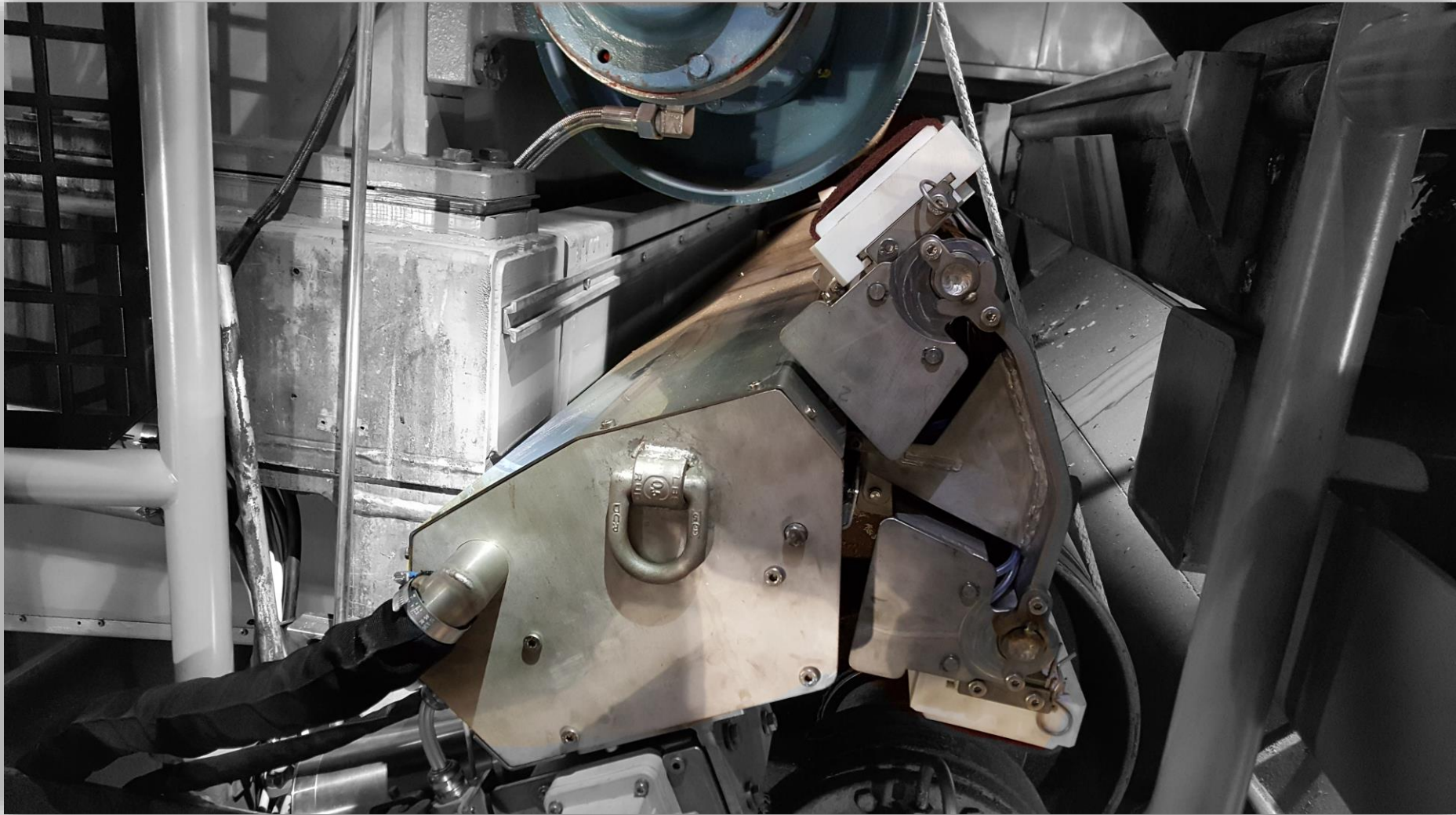
Air Bleed
Valve

Quick Cleaner

Quick Cleaner function is based on a cleaning head that automatically traverses the length of the paper machine roll and removes deposits from roll surfaces. Clean roll surface guarantees constant paper quality and prolongs the change interval of roll.

- 120°C heat resistance, non-corroding materials
- Loading and opening of holder by air pressure element
- Adjustable line pressure, max 700 N/m
- Can be located around a roll in any clockwise position
- Replaceable cleaning materials like abrasive cloth, doctor blade



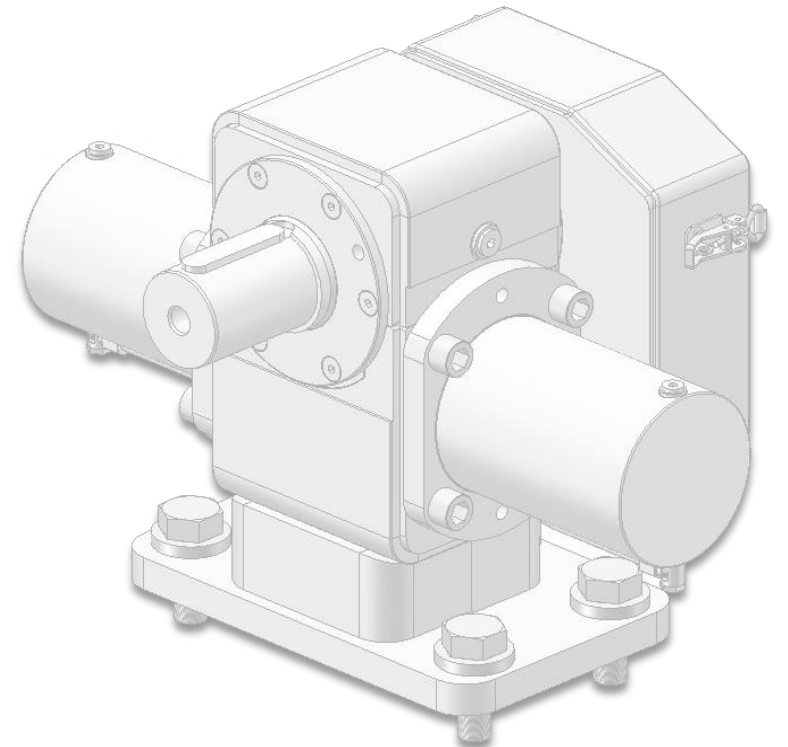


Quick Cleaner with double cleaning heads

Tilt Gear

Tilt Gear is a device that turns the vacuum box to service position. Tilt Gear can replace any old turning device.

- Acid proof steel
- Hydraulic or pneumatic operation
- Stepless angle of rotation
- Rotation max 180°



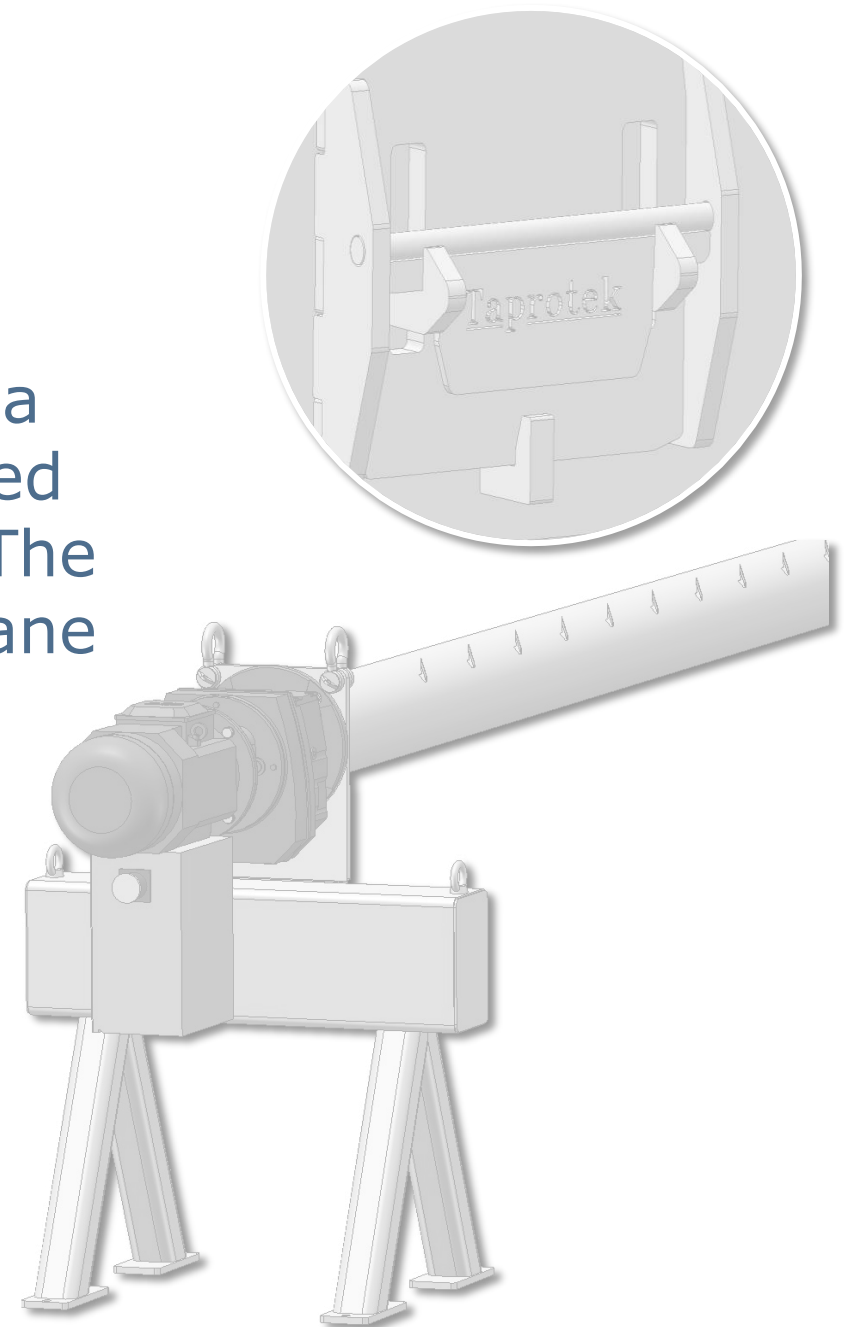


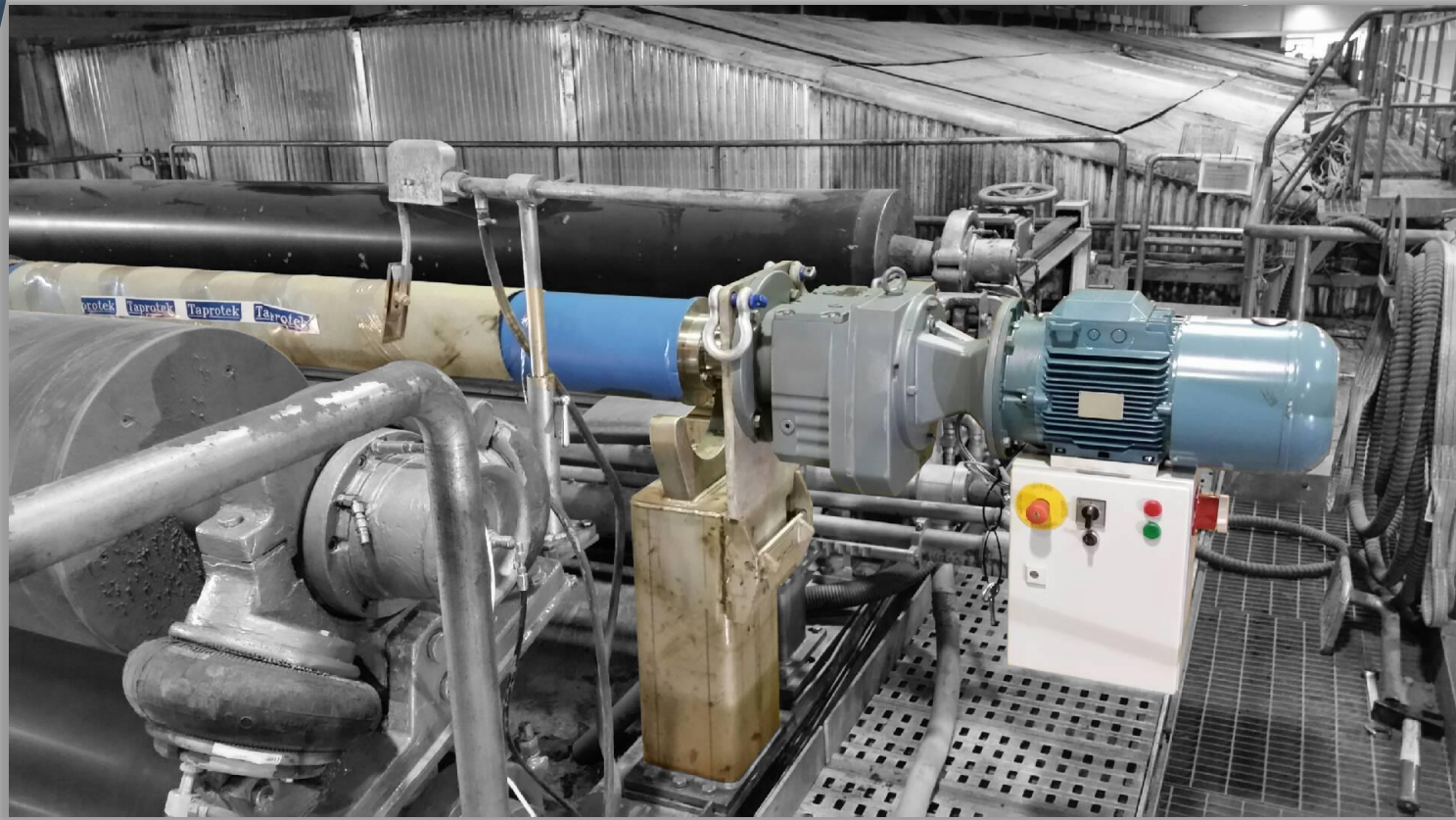
Installed Tilt Gears

Spike Roller

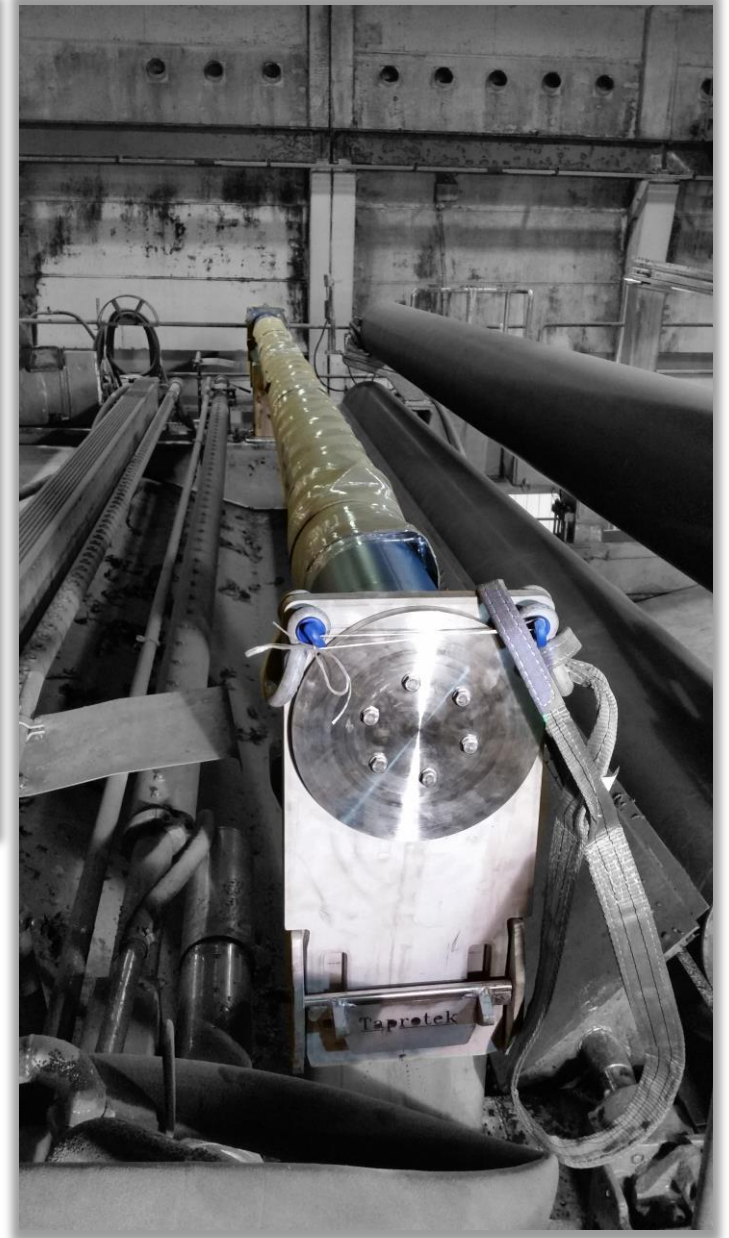
Spike Roller is a practical tool for changing a felt or a wire. Old felt or wire is first attached to the spikes and reeled around the roller. The full coil is then removed by an overhead crane and transported for unwinding.

- Gear motor drive with a brake
- Frequency controlled
- Can be used in many positions
- Easy to use and maintain





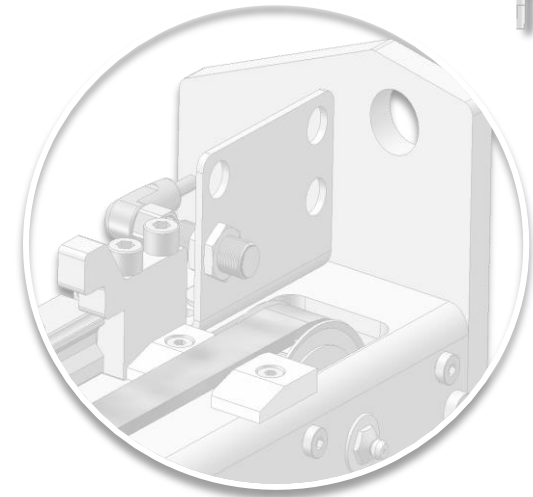
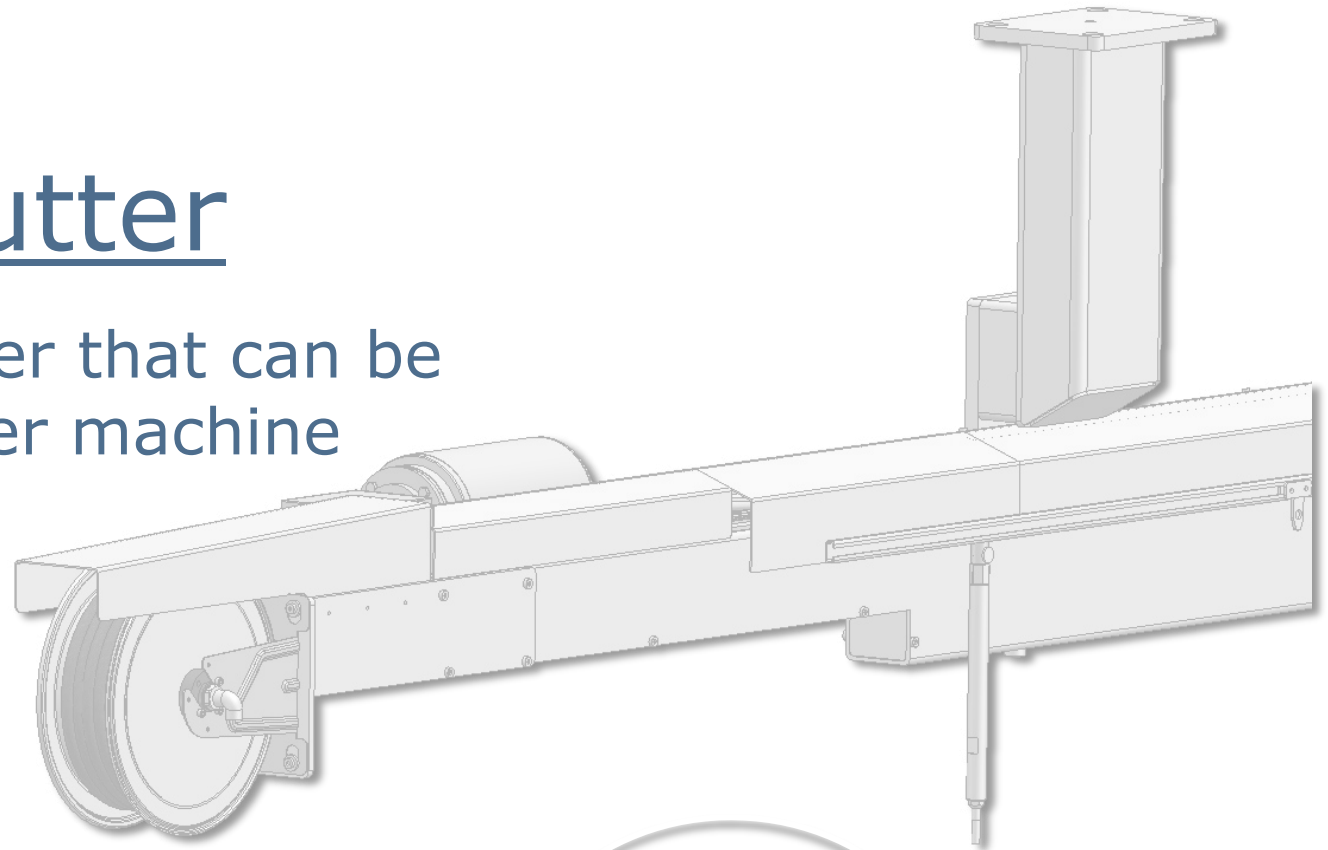
Installed Spike Roller



Tail Threading Cutter

Quick and accurate tail cutter that can be maintained also during paper machine operation

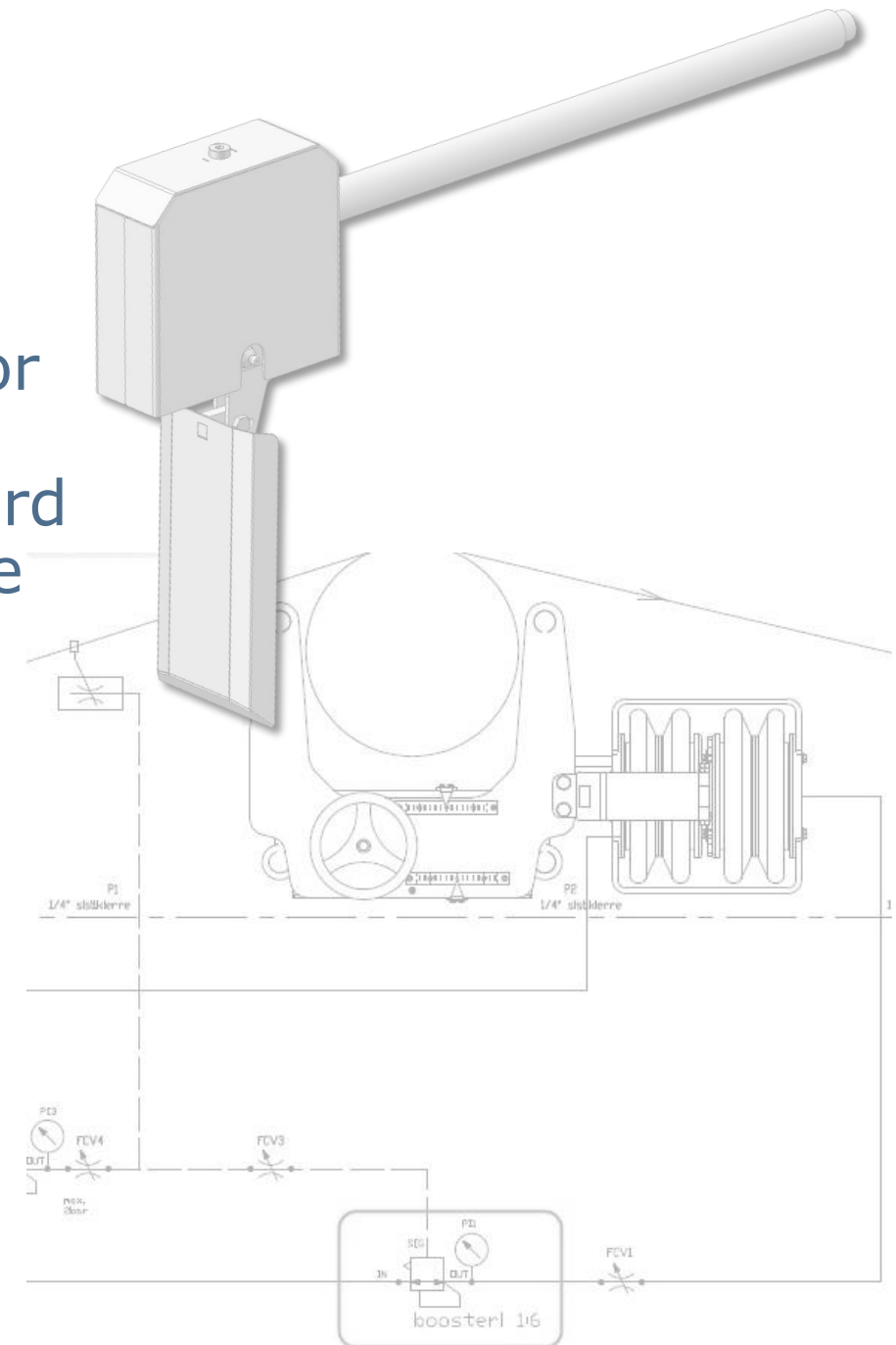
- 80°C heat resistance
- Corrosion proof materials
- Adjustable movements with absolute encoder
- Space for auxiliary cables etc. inside the beam

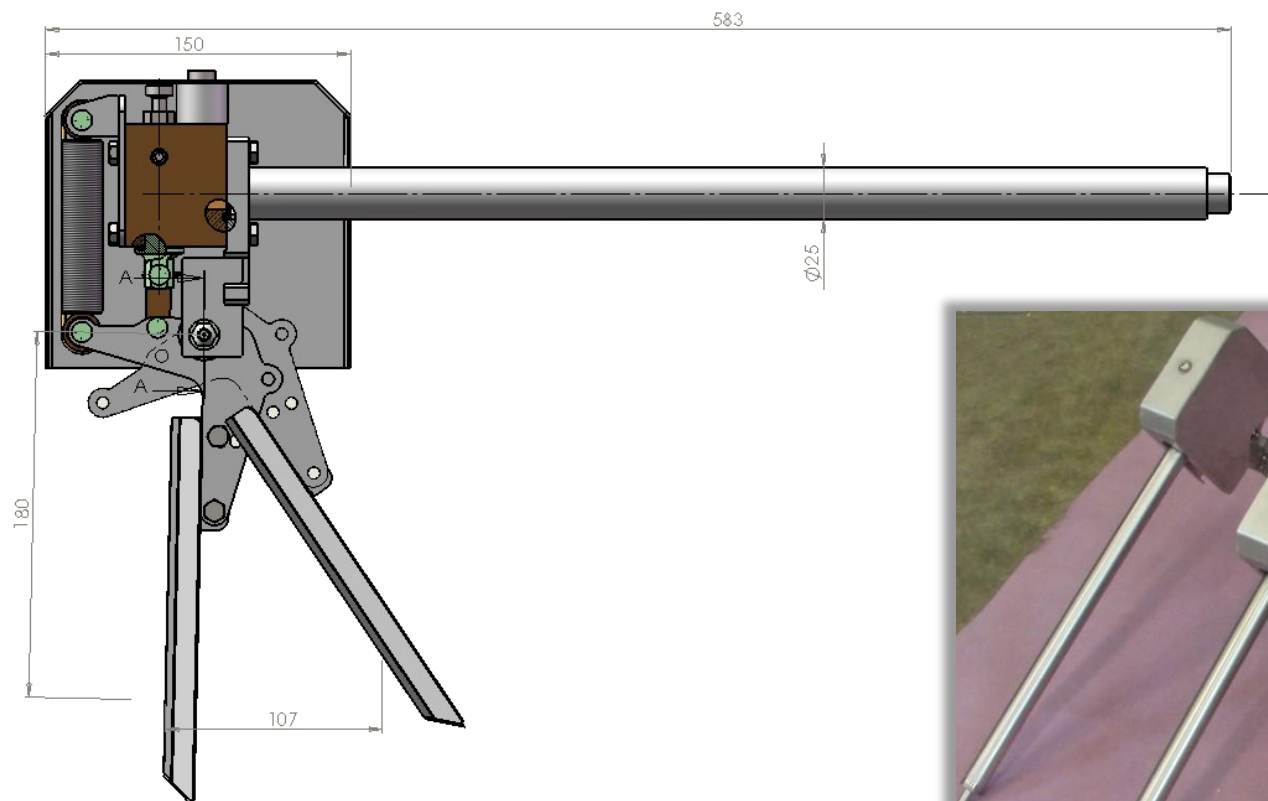


Air Bleed Valve

The wire guiding system is responsible for keeping the wire centered on the rolls during operation. If the wire moves toward the edge of the roll, the movement of the guide palm opens or closes the bleed air valve.

- Corrosion proof materials
- Adjustment screw to avoid jamming
- Useless air bleed restricted in closed position





Services

It's time to dismantle old and build new, but usually a modernization or a renewal carried out at a right time is the most cost effective alternative

Components and service packages

- Actuators (incl. tensioners, guides and doctor blades)
- Frames (incl. material replacements, reinforcements and alterations)
- Replacements of loading devices
- Ergonomic drive shaft protections
- Special devices (incl. broke handling)
- Beds and brackets for drives
- Refurbishing of existing actuators
- Relocation of machines
- Replacement of bolts etc.

Measurements and expert services

- Alignment of rollers in wire and felt runs
- Alignment and adjustment of wire section
- Alignment of PM and measuring lines
- Head box service
- Easy-Laser® measurements for rotating machinery
- Crane rail measurements
- Angle and position measurements for doctor blades

Our reference customers

- Ahlström
 - Kauttua
- Amcor
- DS Smith
- GL&V
- Kotkamills
 - Kotka and Tainionkoski
- Metsä Board
 - Joutseno, Kemi, Kyrö, Tako and Äänekoski
- Powerflute
 - Savon Sellu and Corenso
- Sappi
 - Kirkniemi
- StoraEnso
 - Anjala, Heinola, Inkeroinen, Kaukopää, Tainionkoski, Varkaus and Veitsiluoto
- UPM
 - Jämsänkoski, Kaukas, Kymi, Rauma and Tervasaari
- Voith

Taprotek

Taprotek Ltd is constantly seeking ways to improve the design of its products and alterations take place continually. The possible changes shall not impair the performance of the products.